

# NORTHROCK BUSINESS PARK

3450 N Rock Road, Bldg 700, Suite #701-B & C, Wichita, Kansas

Office or Office/Warehouse For Lease



## PROPERTY FEATURES

- 18 buildings - 300,000 SF
- Lush landscaping
- Adjacent to K-96 Hwy.
- Door-side parking
- On-site property management
- On-site US Mail & UPS drop boxes
- Walking path
- 2 gazebos
- Individual tenant signage
- Landscaped lake area
- Extra storage space ([U-Stor Northrock](#))
- Security patrols at night
- Fiber optics
- More details at [northrockbp.com](http://northrockbp.com)

## SUITE #701-B

- 810 SF available
- Open Office
- Large Windows
- Common break room
- **\$1,300** / month (full-service)

## SUITE #701-C

- 1,400 SF available
- All Open Warehouse
- Air-Conditioned
- Common break room
- Double back door or optional O/H door
- **\$1,450** / month (includes utilities)



3450 N. Rock Road #201  
Wichita, KS 67226  
[amcwichita.com](http://amcwichita.com)

FOR INFORMATION

Contact Ross Way

**(316) 681-1711**

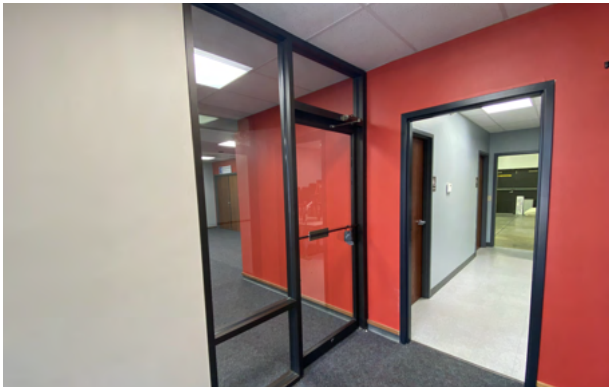
[ross@amcwichita.com](mailto:ross@amcwichita.com)

# NORTHROCK BUSINESS PARK

3450 N Rock Road, Bldg 700, Suite #701-B & C, Wichita, Kansas

Office or Office/Warehouse For Lease

## INTERIOR/EXTERIOR PHOTOS



3450 N. Rock Road #201  
Wichita, KS 67226  
amcwichita.com

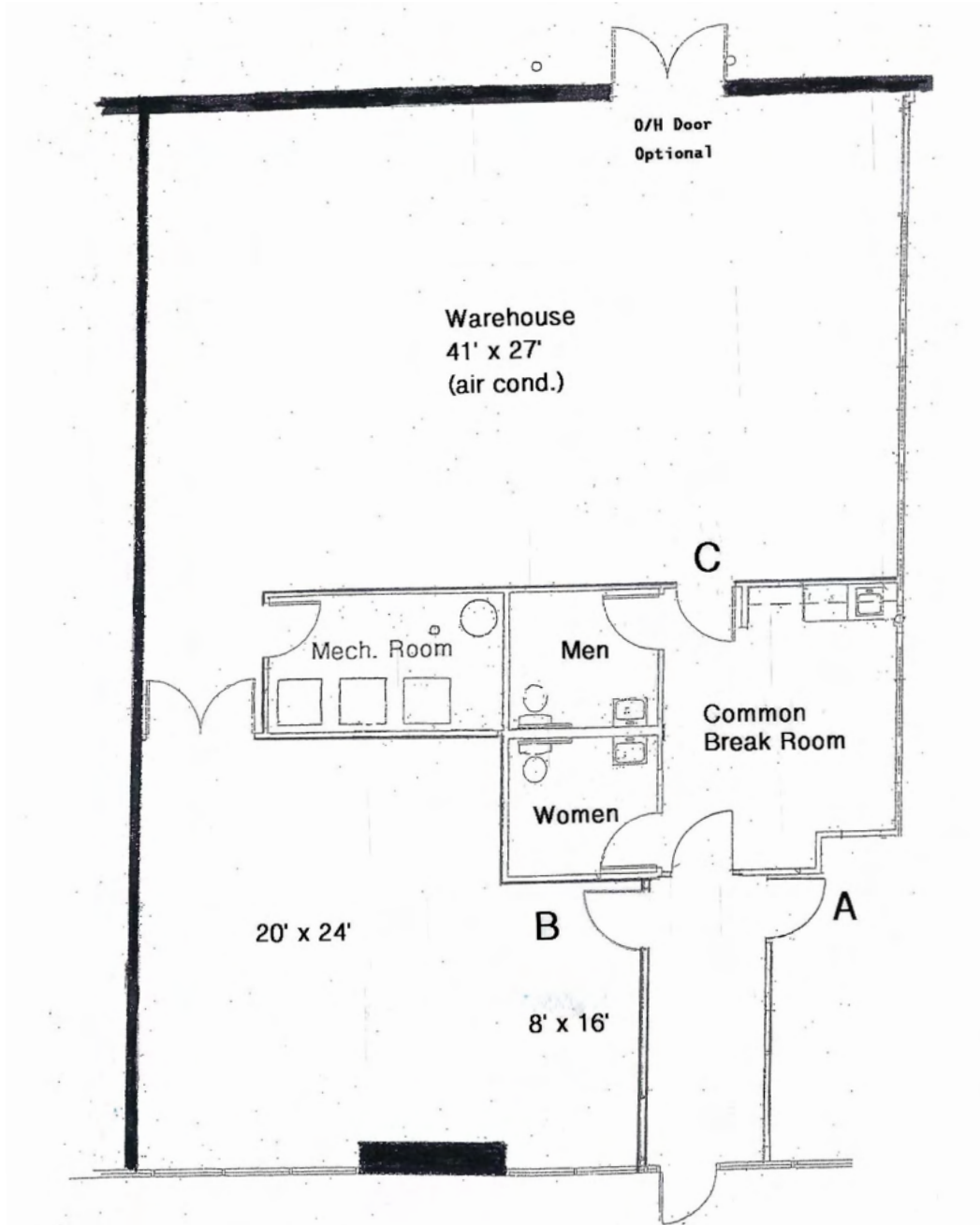
FOR INFORMATION  
Contact Ross Way  
**(316) 681-1711**  
ross@amcwichita.com

# NORTHROCK BUSINESS PARK

3450 N Rock Road, Bldg 700, Suite #701-B & C, Wichita, Kansas

Office or Office/Warehouse For Lease

## FLOOR PLAN



3450 N. Rock Road #201  
Wichita, KS 67226  
amcwichita.com

FOR INFORMATION

Contact Ross Way

**(316) 681-1711**

ross@amcwichita.com

# NORTHROCK BUSINESS PARK

3450 N Rock Road, Bldg #700, Suite #701-B & C, Wichita, Kansas  
Office or Office/Warehouse For Lease

## NORTHROCK BUSINESS PARK SITE PLAN



3450 N. Rock Road #201  
Wichita, KS 67226  
amcwichita.com

FOR INFORMATION  
Contact Ross Way  
**(316) 681-1711**  
ross@amcwichita.com

# NORTHROCK BUSINESS PARK

3450 N Rock Road, Bldg 700, Suite #701-B & C, Wichita, Kansas

Office or Office/Warehouse For Lease

## LOCATION/AERIAL



3450 N. Rock Road #201  
Wichita, KS 67226  
amcwichita.com

FOR INFORMATION

Contact Ross Way

**(316) 681-1711**

ross@amcwichita.com