

# NORTHROCK BUSINESS PARK

8200 E 34th St N, Bldg 1200, Suite #1209-1210 Wichita, Kansas  
Office/Warehouse For Lease



## PROPERTY FEATURES

- 18 buildings - 300,000 SF
- Lush landscaping
- Adjacent to K-96 Hwy.
- Door-side parking
- On-site property management
- On-site US Mail & UPS drop boxes
- Walking path
- 2 gazebos
- Individual tenant signage
- Landscaped lake area
- Extra storage space ([U-Stor Northrock](#))
- Security patrols at night
- Fiber optics
- More details at [northrockbp.com](http://northrockbp.com)

## SUITE #1209-1210

- 3,000 SF available
- Reception area
- Private offices
- Conference room
- Cubicle areas
- Break room
- Warehouse w/ air conditioning
- **\$3,460 / month** (modified gross)



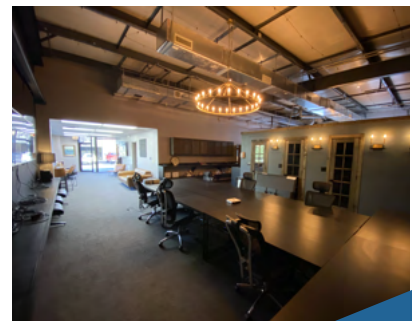
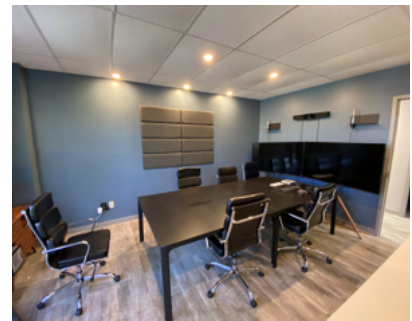
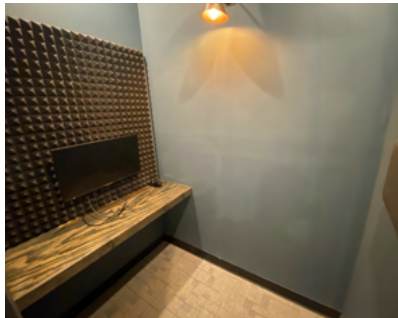
3450 N. Rock Road #201  
Wichita, KS 67226  
[amcwichita.com](http://amcwichita.com)

FOR INFORMATION  
**Contact Ross Way**  
**(316) 681-1711**  
[ross@amcwichita.com](mailto:ross@amcwichita.com)

# NORTHROCK BUSINESS PARK

8200 E 34th St N, Bldg 1200, Suite #1209-1210 Wichita, Kansas  
Office/Warehouse For Lease

## INTERIOR PHOTOS



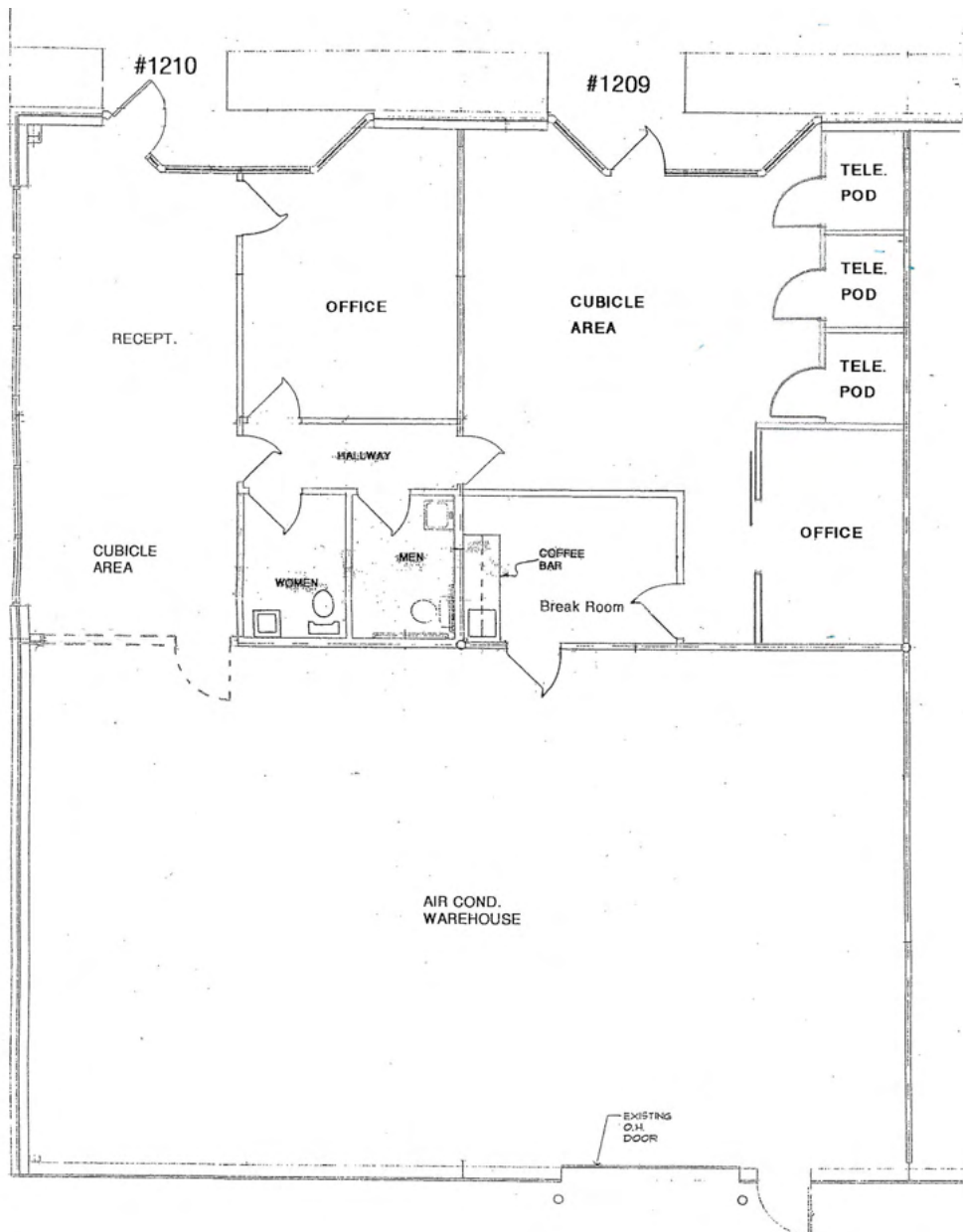
3450 N. Rock Road #201  
Wichita, KS 67226  
amcwichita.com

FOR INFORMATION  
Contact Ross Way  
**(316) 681-1711**  
ross@amcwichita.com



**NORTHROCK BUSINESS PARK**  
8200 E 34th St N, Bldg 1200, Suite #1209-1210 Wichita, Kansas  
Office/Warehouse For Lease

**FLOOR PLAN**



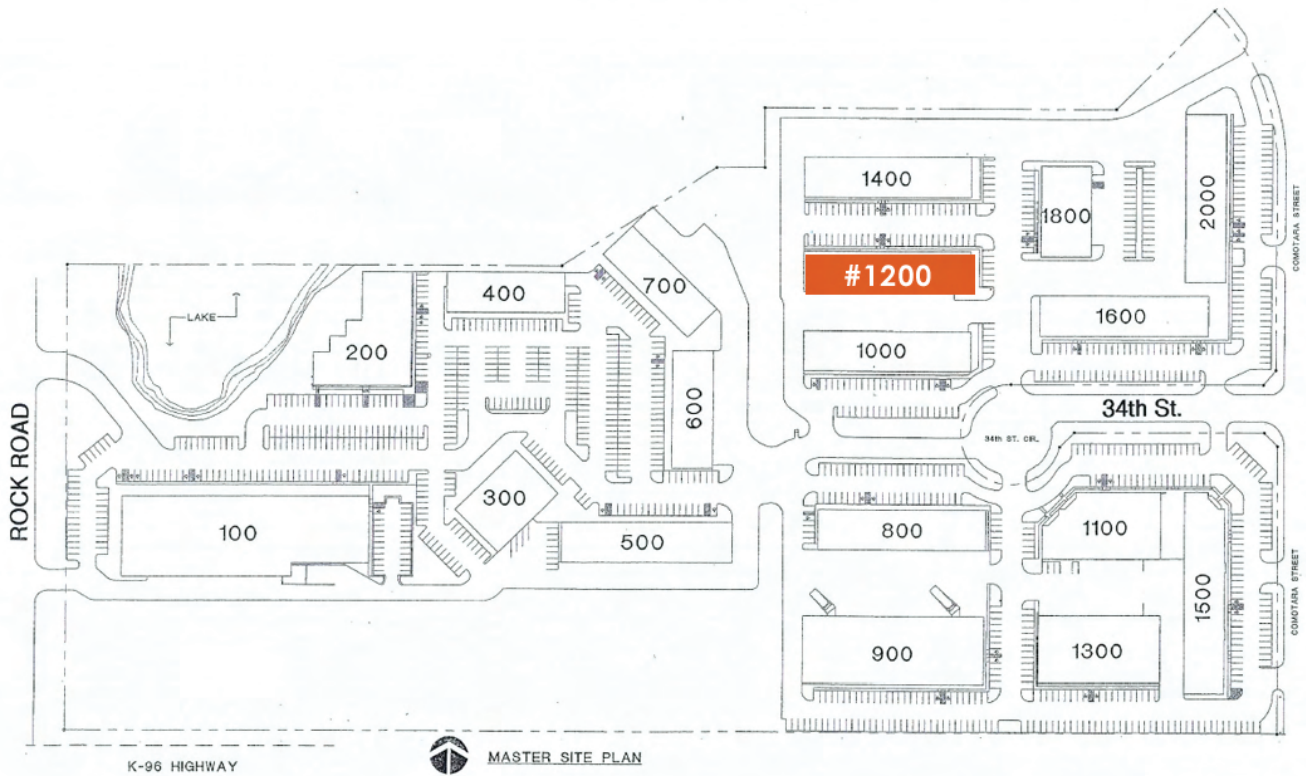
3450 N. Rock Road #201  
Wichita, KS 67226  
amcwichita.com

FOR INFORMATION  
**Contact Ross Way**  
**(316) 681-1711**  
ross@amcwichita.com

# NORTHROCK BUSINESS PARK

8200 E 34th St N, Bldg 1200, Suite #1209-1210 Wichita, Kansas  
Office/Warehouse For Lease

## NORTHROCK BUSINESS PARK SITE PLAN



3450 N. Rock Road #201  
Wichita, KS 67226  
amcwichita.com

FOR INFORMATION  
Contact Ross Way  
**(316) 681-1711**  
ross@amcwichita.com



# NORTHROCK BUSINESS PARK

8200 E 34th St N, Bldg 1200, Suite #1209-1210 Wichita, Kansas  
Office/Warehouse For Lease

## LOCATION/AERIAL



3450 N. Rock Road #201  
Wichita, KS 67226  
amcwichita.com

FOR INFORMATION  
Contact Ross Way  
**(316) 681-1711**  
ross@amcwichita.com