

NORTHROCK BUSINESS PARK

8200 E 34th St N, Bldg 1200, Suite #1209-1210 Wichita, Kansas
Office/Warehouse For Lease



PROPERTY FEATURES

- 18 buildings - 300,000 SF
- Lush landscaping
- Adjacent to K-96 Hwy.
- Door-side parking
- On-site property management
- On-site US Mail & UPS drop boxes
- Walking path
- 2 gazebos
- Individual tenant signage
- Landscaped lake area
- Extra storage space ([U-Stor Northrock](#))
- Security patrols at night
- Fiber optics
- More details at northrockbp.com

SUITE #1209-1210

- 3,000 SF available
- Reception area
- Private offices
- Conference room
- Cubicle areas
- Break room
- Warehouse w/ air conditioning
- **\$3,460 / month** (modified gross)



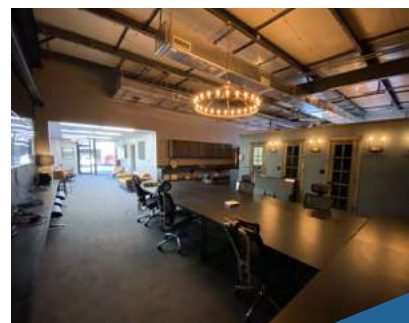
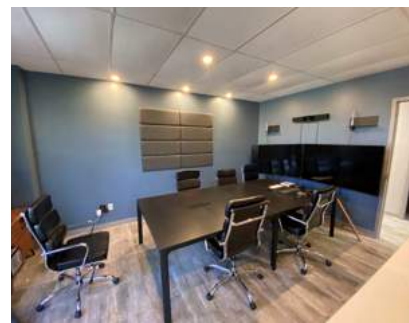
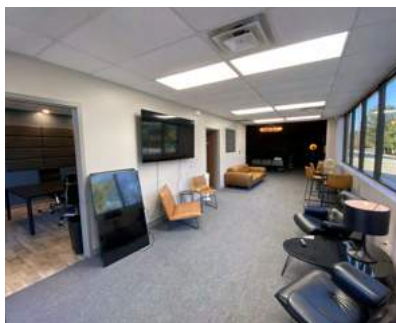
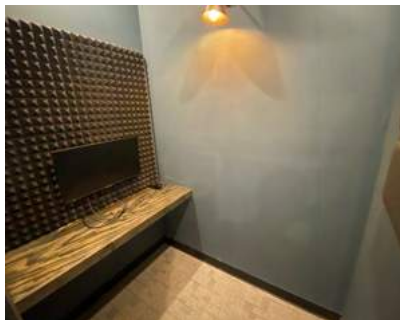
3450 N. Rock Road #201
Wichita, KS 67226
amcwichita.com

FOR INFORMATION
Contact Ross Way
(316) 681-1711
ross@amcwichita.com

NORTHROCK BUSINESS PARK

8200 E 34th St N, Bldg 1200, Suite #1209-1210 Wichita, Kansas
Office/Warehouse For Lease

INTERIOR PHOTOS

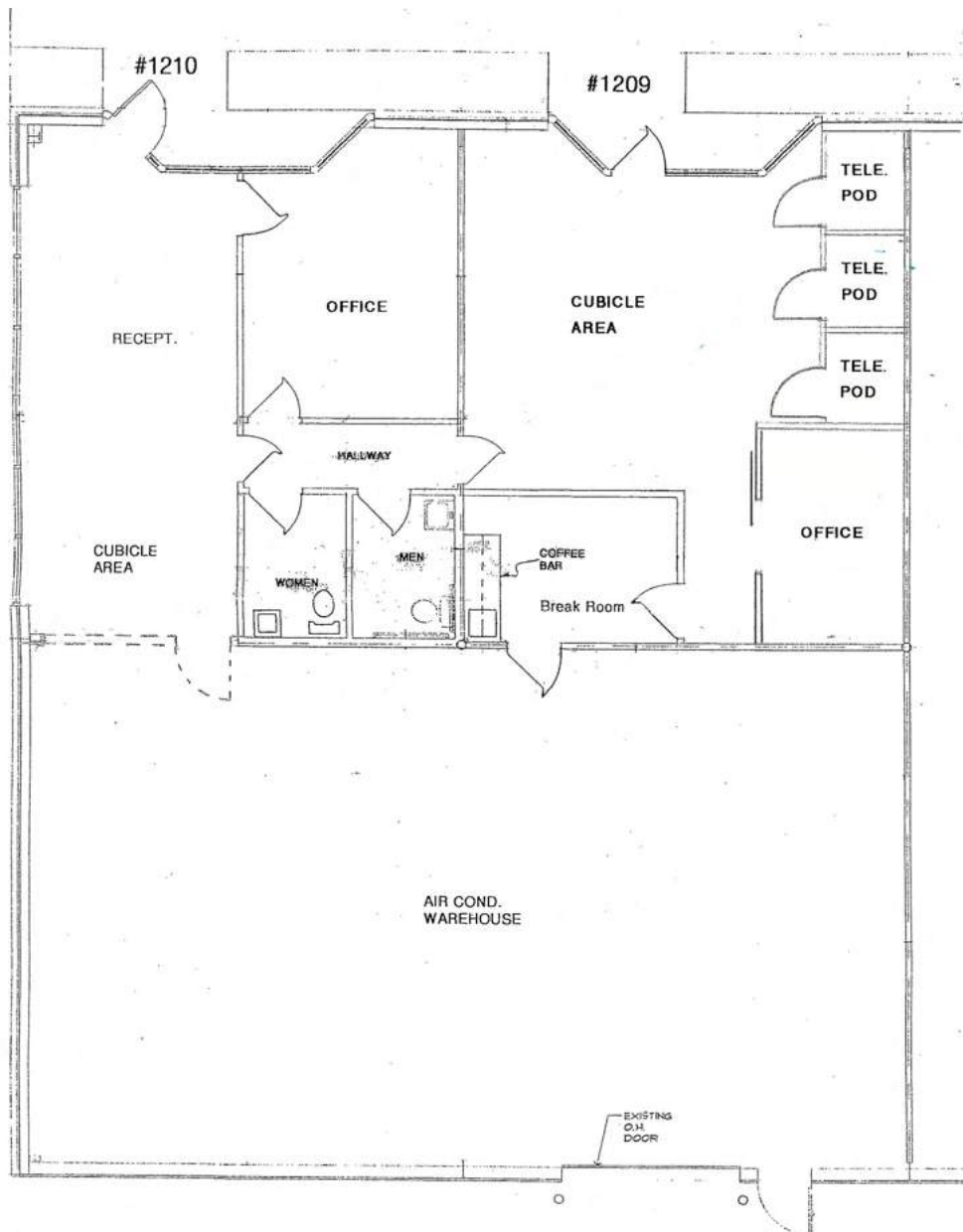


3450 N. Rock Road #201
Wichita, KS 67226
amcwichita.com

FOR INFORMATION
Contact Ross Way
(316) 681-1711
ross@amcwichita.com

NORTHROCK BUSINESS PARK
8200 E 34th St N, Bldg 1200, Suite #1209-1210 Wichita, Kansas
Office/Warehouse For Lease

FLOOR PLAN

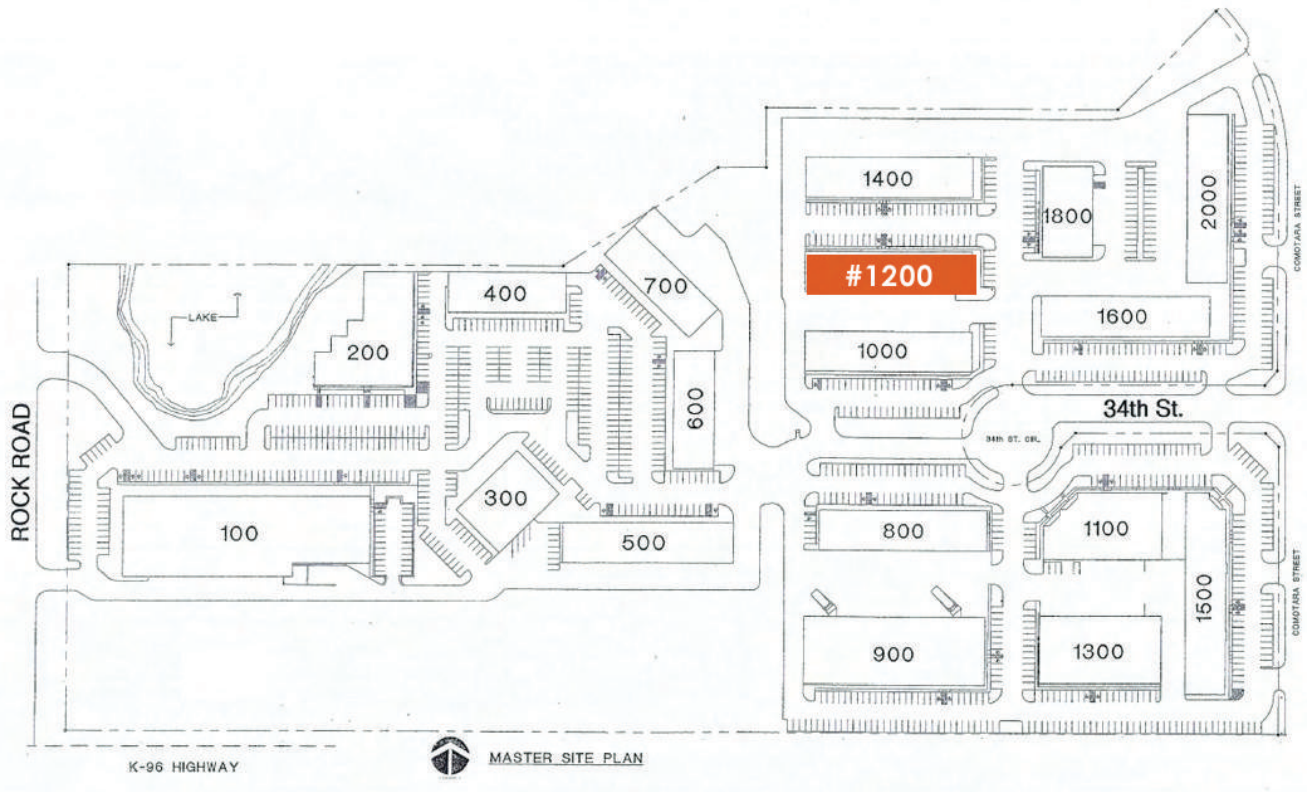


3450 N. Rock Road #201
Wichita, KS 67226
amcwichita.com

FOR INFORMATION
Contact Ross Way
(316) 681-1711
ross@amcwichita.com

NORTHROCK BUSINESS PARK
8200 E 34th St N, Bldg 1200, Suite #1209-1210 Wichita, Kansas
Office/Warehouse For Lease

NORTHROCK BUSINESS PARK SITE PLAN



3450 N. Rock Road #201
Wichita, KS 67226
amcwichita.com

FOR INFORMATION
Contact Ross Way
(316) 681-1711
ross@amcwichita.com

NORTHROCK BUSINESS PARK

8200 E 34th St N, Bldg 1200, Suite #1209-1210 Wichita, Kansas
Office/Warehouse For Lease

LOCATION/AERIAL



3450 N. Rock Road #201
Wichita, KS 67226
amcwichita.com

FOR INFORMATION
Contact Ross Way
(316) 681-1711
ross@amcwichita.com