

NORTHROCK BUSINESS PARK

3450 N Rock Road, Bldg 500, Suite #502-A, Wichita, Kansas

Office/Warehouse For Lease



PROPERTY FEATURES

- 18 buildings - 300,000 SF
- Lush landscaping
- Adjacent to K-96 Hwy.
- Door-side parking
- On-site property management
- On-site US Mail & UPS drop boxes
- Walking path
- 2 gazebos
- Individual tenant signage
- Landscaped lake area
- Extra storage space (U-Stor Northrock)
- Security patrols at night
- Fiber optics
- More details at northrockbp.com

SUITE #502-A

- 180 SF available
- Single Office
- **\$400** / month
(utilities & janitorial included)
- Full Service



3450 N. Rock Road #201
Wichita, KS 67226
amcwichita.com

FOR INFORMATION

Contact Ross Way

(316) 681-1711

ross@amcwichita.com

NORTHROCK BUSINESS PARK
3450 N Rock Road, Bldg 500, Suite #502-A, Wichita, Kansas
Office/Warehouse For Lease

INTERIOR PHOTOS



3450 N. Rock Road #201
Wichita, KS 67226
amcwichita.com

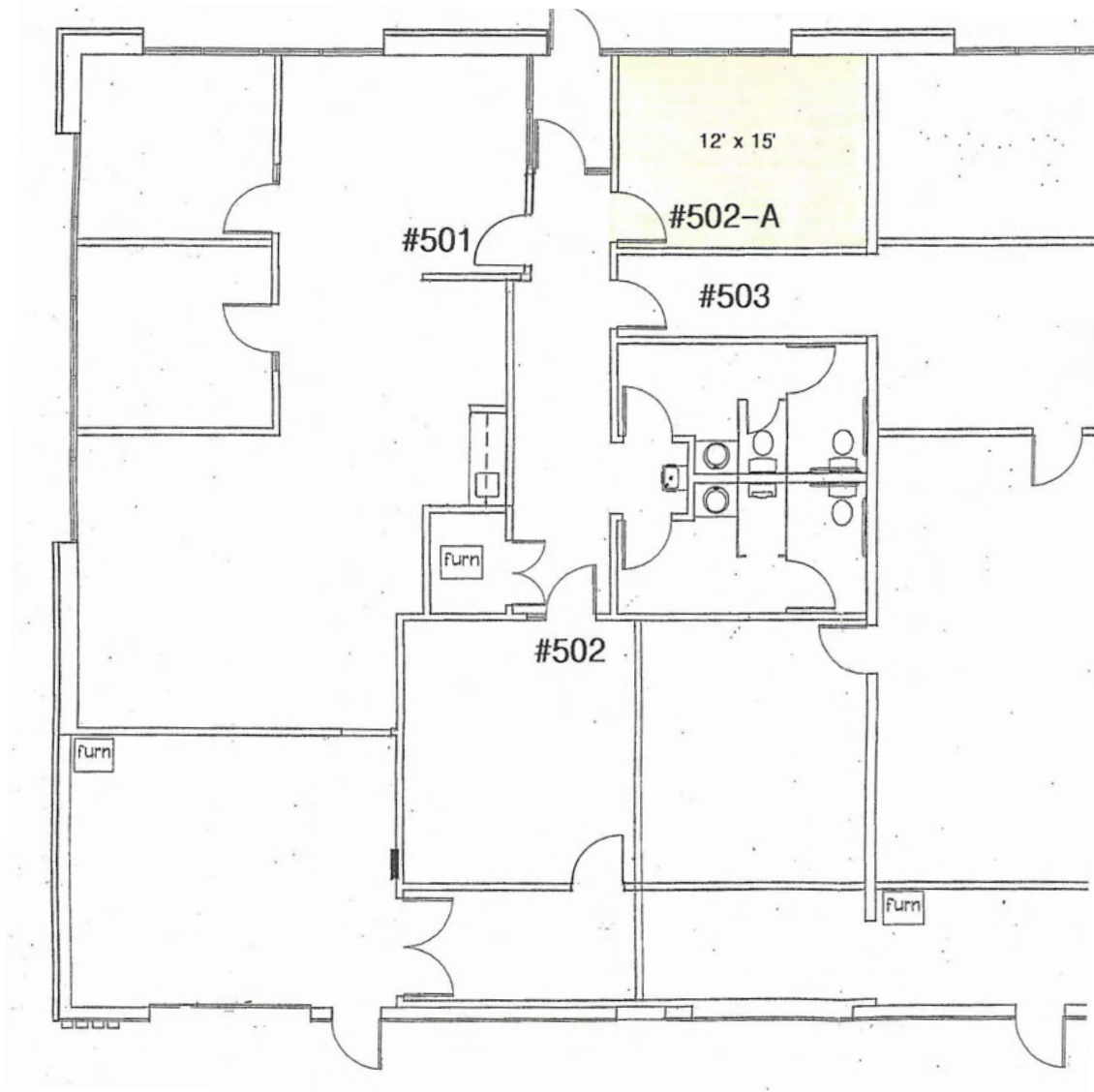
FOR INFORMATION
Contact Ross Way
(316) 681-1711
ross@amcwichita.com

NORTHROCK BUSINESS PARK

3450 N Rock Road, Bldg 500, Suite #502-A, Wichita, Kansas

Office/Warehouse For Lease

FLOOR PLAN



3450 N. Rock Road #201
Wichita, KS 67226
amcwichita.com

FOR INFORMATION

Contact Ross Way

(316) 681-1711

ross@amcwichita.com

NORTHROCK BUSINESS PARK

3450 N Rock Road, Bldg 500, Suite #502-A, Wichita, Kansas
Office/Warehouse For Lease

NORTHROCK BUSINESS PARK SITE PLAN



3450 N. Rock Road #201
Wichita, KS 67226
amcwichita.com

FOR INFORMATION
Contact Ross Way
(316) 681-1711
ross@amcwichita.com

NORTHROCK BUSINESS PARK

3450 N Rock Road, Bldg 500, Suite #502-A, Wichita, Kansas
Office/Warehouse For Lease

LOCATION/AERIAL



3450 N. Rock Road #201
Wichita, KS 67226
amcwichita.com

FOR INFORMATION
Contact Ross Way
(316) 681-1711
ross@amcwichita.com